

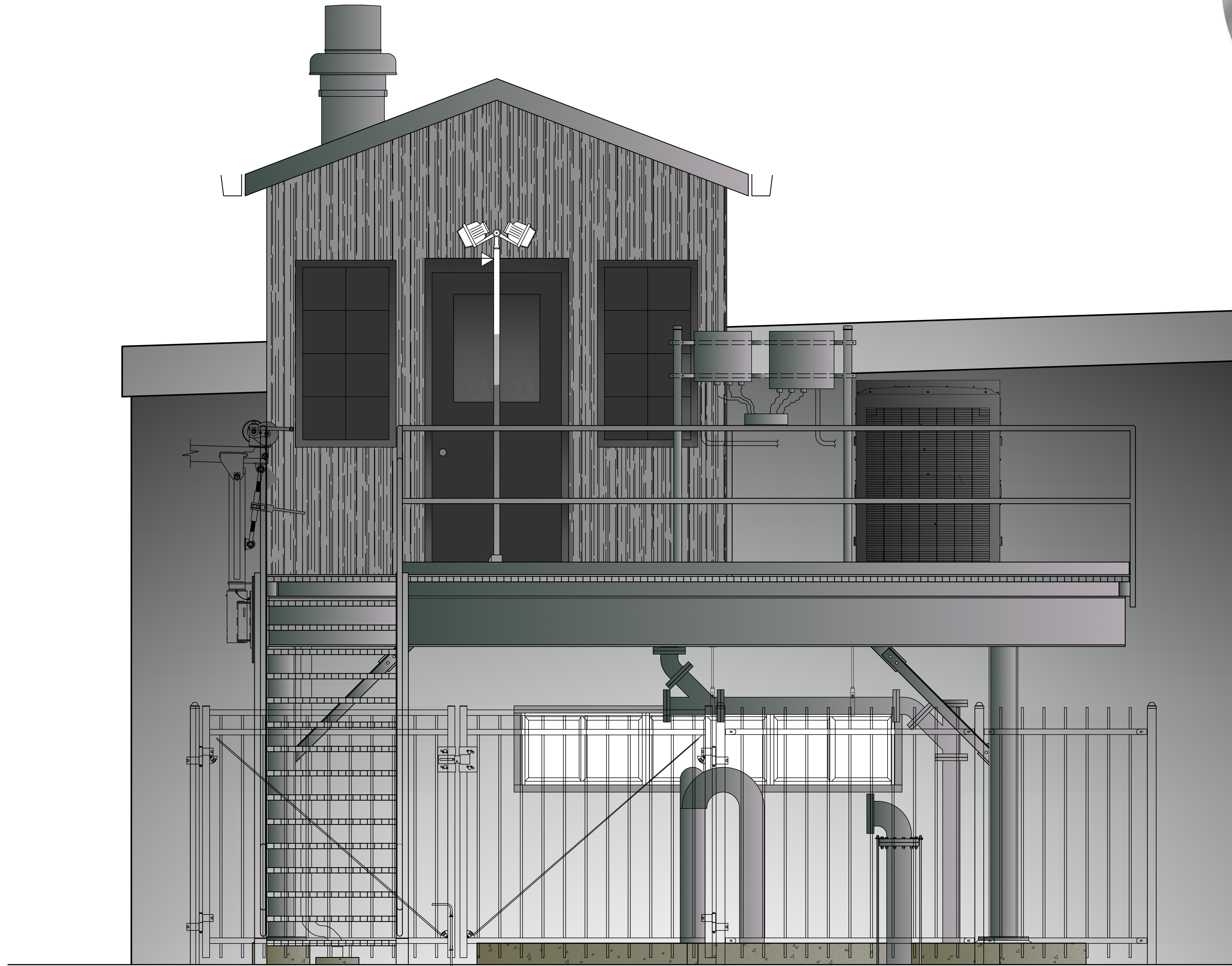
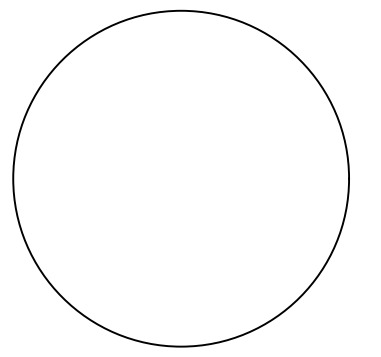


Carroll Engineering

CORPORATE OFFICE
 949 EASTON ROAD
 WARRINGTON, PA 18976
 PHONE: 215.343.5700
 FAX: 215.343.0875

630 Freedom Business Ctr., 3rd Fl. 105 Rader Boulevard, Suite 206
 King of Prussia, PA 19406 Hillsborough, NJ 08844
 Phone: 610.572.7093 Fax: 908.874.7500
 433 Lancaster Avenue, Suite 200 101 Larry Holmes, Suite 201
 Mahan, PA 15355 Easton, PA 18042
 Phone: 610.489.5100 Phone: 610.507.4740

www.carrollengineering.com



STREET RENDERING

NORTH UNION STREET
 PUMP STATION REPLACEMENT
 SITUATED IN
 CITY OF LAMBERTVILLE, HUNTERDON COUNTY, NEW JERSEY
 PREPARED FOR
 LAMBERTVILLE MUNICIPAL UTILITIES AUTHORITY
 P.O. BOX 300, 3 BRIDGE STREET
 LAMBERTVILLE, NEW JERSEY 08530

NO.	DATE	DESCRIPTION	INITIALS

DATE	3-15-24
CADD FILE	RENDERING
JOB NO	23-7501.001
DSG BY	MAT
DWN BY	TSB
CKD BY	MJM
SCALE	3/4" = 1'0"
DRAWER NUMBER	-
SHEET 1	OF 2 SHEETS
DRAWING NUMBER	
1	

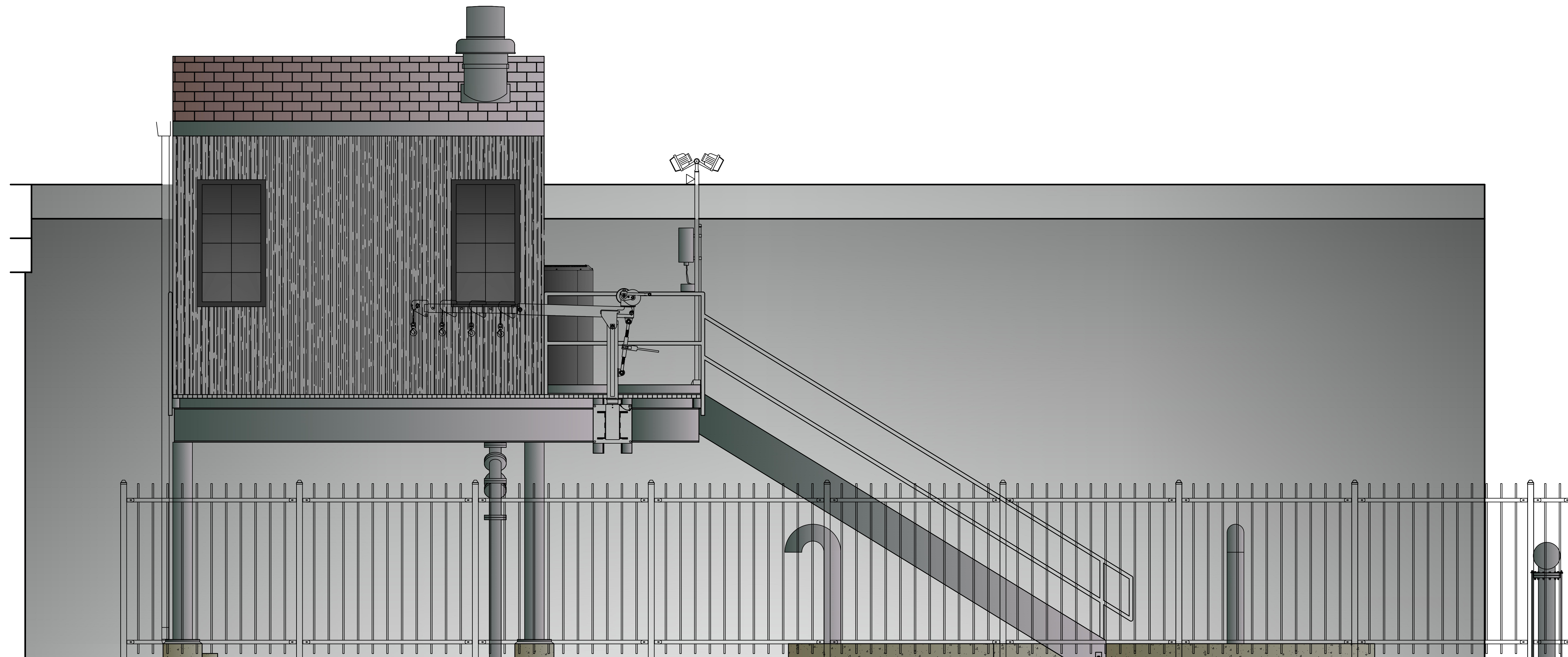
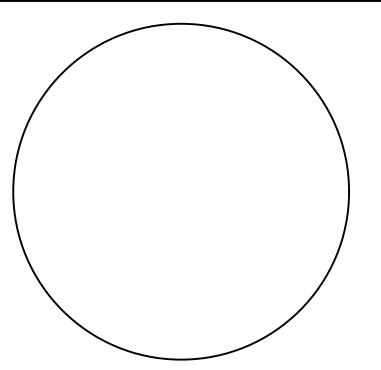


Carroll Engineering

CORPORATE OFFICE
 949 EASTON ROAD
 WARRINGTON, PA 18976
 PHONE: 215.343.5700
 FAX: 215.343.0875

630 Freedom Business Ctr., 3rd Fl. 105 Rader Boulevard, Suite 206
 King of Prussia, PA 19406 Hillsborough, NJ 08844
 Phone: 610.572.7093 Fax: 908.874.7500
 433 Lancaster Avenue, Suite 200 101 Larry Holmes, Suite 201
 Mahan, PA 15755 Easton, PA 18042
 Phone: 610.489.5100 Phone: 610.567.4740

www.carrollengineering.com



NORTHERLY RENDERING

NORTH UNION STREET
 PUMP STATION REPLACEMENT
 SITUATED IN
 PREPARED FOR
 LAMBERTVILLE MUNICIPAL UTILITIES AUTHORITY
 P.O. BOX 300, 3 BRIDGE STREET
 LAMBERTVILLE, NEW JERSEY 08530

NO.	DATE	DESCRIPTION	INITIALS

DATE	3-15-24
CADD FILE	RENDERING
JOB NO	23-7501.001
DSG BY	MAT
DWN BY	TSB
CKD BY	MJM
SCALE	1/2" = 1'0"
DRAWER NUMBER	-
SHEET	2 OF 2 SHEETS
DRAWING NUMBER	
2	