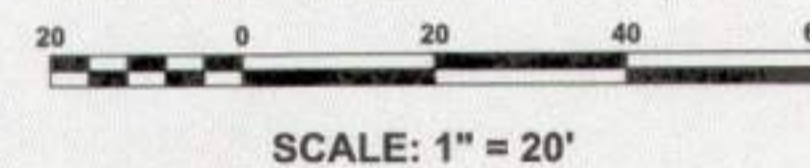


**SWAN STREET ROAD CLOSURE DETAIL**  
SCALE: 1" = 20'



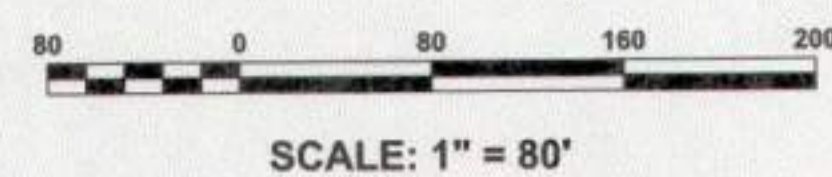
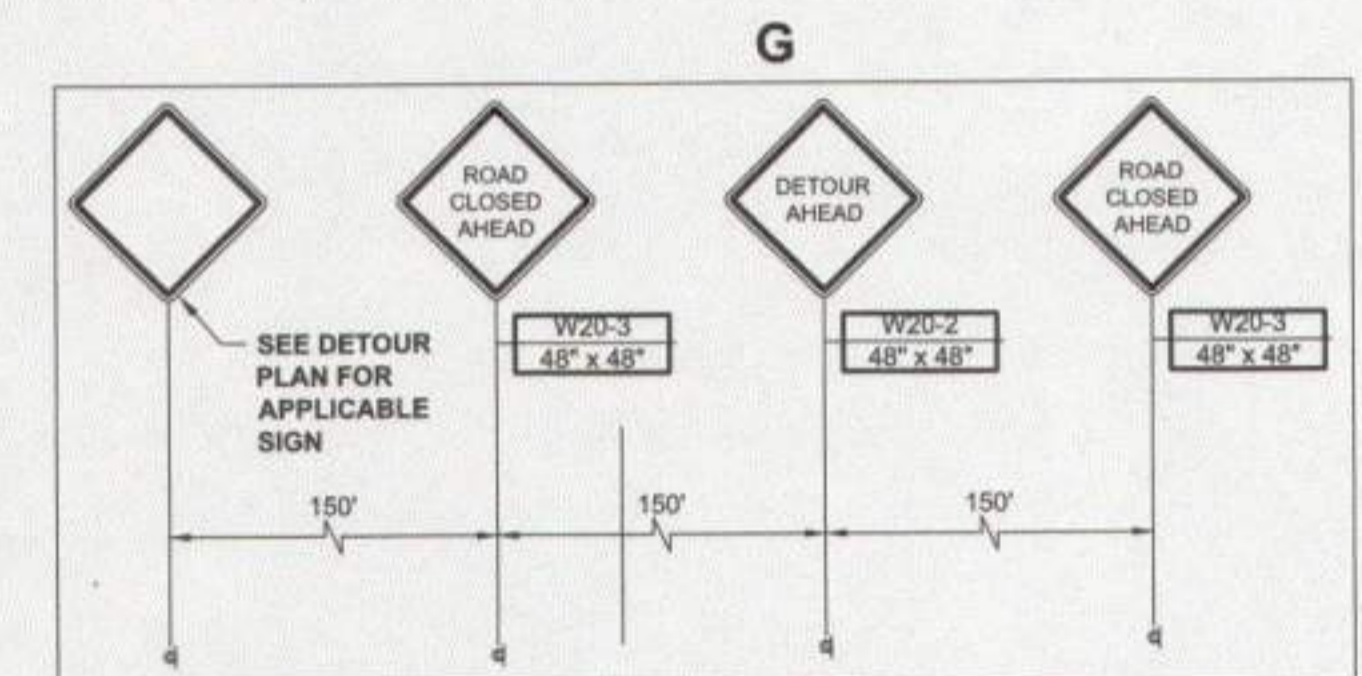
**TRAFFIC CONTROL LEGEND**

- POST WITH MOUNTED SIGN
- TYPE III BREAKAWAY BARRICADE WITH SIGN
- TRAFFIC DRUMS
- WORK ZONE
- SOUTH BOUND NJ-29 TRAFFIC DETOUR
- DIRECTION OF ONE-WAY TRAFFIC

- NOTE:
1. ALL INSTALLATION PROCEDURES FOR TRAFFIC CONTROL SHALL CONFORM WITH ANY AND ALL NJDOT REQUIREMENTS AND COUNTY REQUIREMENTS.
  2. NJDOT APPROVED MOUNTED LIGHTS SHALL BE MOUNTED ON THE SIGNS DURING NIGHT WORK.

**SIGN LEGEND**

A	B	C	D



**NOTICE**  
THIS DRAWING AND ALL INFORMATION CONTAINED HEREIN IS AUTHORIZED FOR USE ONLY BY THE PARTY FOR WHOM THE WORK WAS CONTRACTED OR TO WHOM IT IS CERTIFIED.  
THIS DRAWING MAY NOT BE COPIED, REPRODUCED, DISCLOSED, DISTRIBUTED, OR RELIED UPON FOR ANY OTHER PURPOSE WITHOUT THE WRITTEN CONSENT OF SUBURBAN CONSULTING ENGINEERS, INC.  
PER N.J.A.C. ELECTRONIC SUBMISSIONS NOT CONTAINING A VALID DIGITAL SEAL OR PAPER COPIES NOT CONTAINING A RAISED SEAL ARE NOT ORIGINALS AND MAY HAVE BEEN ALTERED.  
© COPYRIGHT 2019 SUBURBAN CONSULTING ENGINEERS, INC.™ ALL RIGHTS RESERVED

DESCRIPTION	NO.	DATE:	BY:	CHK:
REVISIONS				

DRAWN BY: JMF  
03/29/2019  
CHECKED BY: MKM  
03/29/2019  
CHECKED BY: [Signature]  
**ANDREW S. HOLT, PE**  
NJ PROFESSIONAL ENGINEER  
LICENSE NO. 24GE03855400  
DATE: 03/29/2019

**SC E SUBURBAN CONSULTING ENGINEERS, INC.**  
GOA NO: 26242007500  
Civil Engineers - Municipal Engineers -  
Landscape Architects -  
Planners - Environmentalists - Land Surveyors -  
96 US Highway 206, Suite 101 2430 Highway 34, Bldg. A Suite 1B  
Flanders, NJ 07836 - 973.398.1776 Wall, NJ 08736 - 732.282.1776  
EXCELLENCE • ECONOMY • ENVIRONMENT

LAMBERTVILLE MUNICIPAL UTILITIES AUTHORITY  
2019 SANITARY SEWER COLLECTION SYSTEM REHABILITATION  
CITY OF LAMBERTVILLE, COUNTY OF HUNTERDON,  
STATE OF NEW JERSEY  
**SWAN STREET TRAFFIC DETOUR PLAN II**

PROJECT NUMBER: SCE-10130.021  
SCALE: AS NOTED  
SHEET 10 OF 12  
REVISION: -