

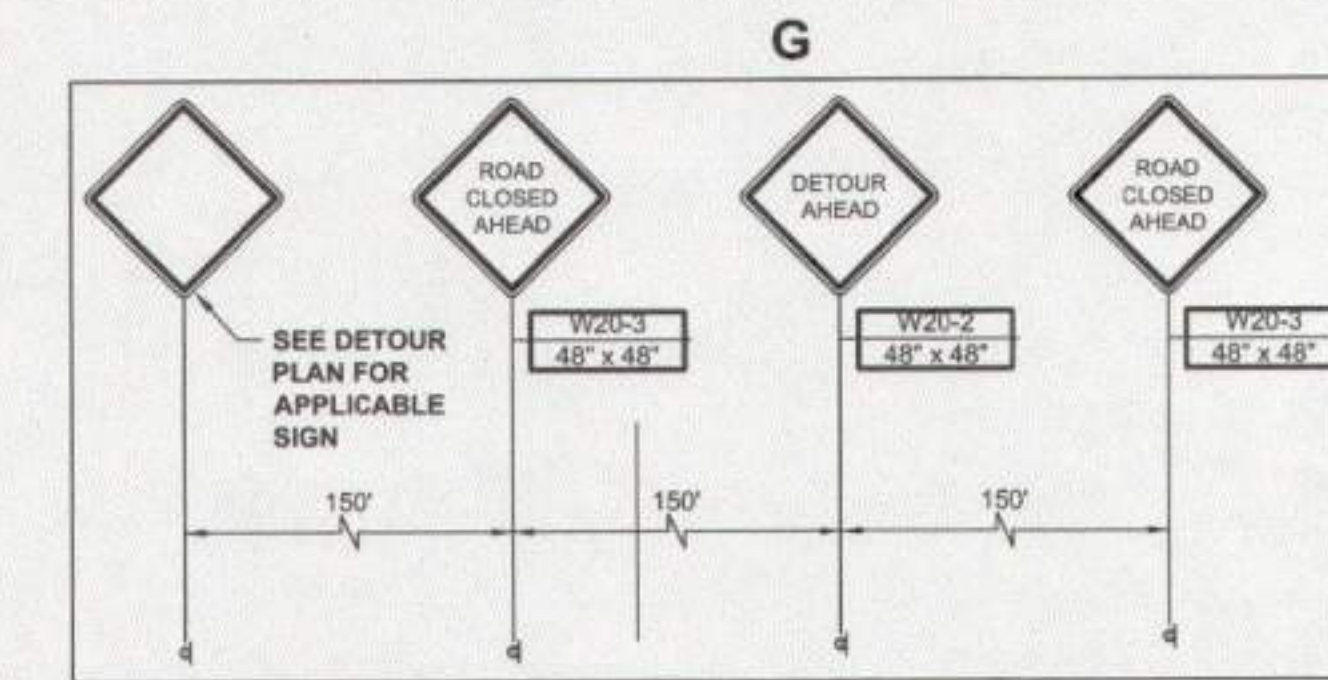
E:\SCE\Lambertville\10130 Sewer Rehabilitation\Sheets\10130.021 07-10 Traffic Detour Plans.dwg Fri, Mar 29, 2019 - 2:10pm JFowler SUBURBAN CONSULTING ENGINEERS, INC.



**SWAN STREET
TRAFFIC DETOUR PLAN I**
SCALE: 1" = 80'

SIGN LEGEND

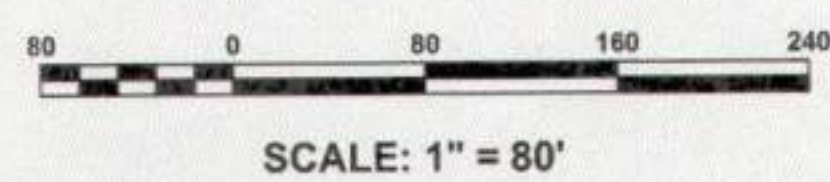
A DETOUR M4-8 30" X 15" BLK/ORG	B DETOUR M4-8 30" X 15" BLK/ORG	C DETOUR M4-8 30" X 15" BLK/ORG	D DETOUR M4-8 30" X 15" BLK/ORG
WEST M3-1 36" X 18" BLK/WHITE	WEST M3-1 36" X 18" BLK/WHITE	WEST M3-1 36" X 18" BLK/WHITE	WEST M3-1 36" X 18" BLK/WHITE
→ M6-1(R) 21" X 15" BLK/ORG	← M6-1(L) 21" X 15" BLK/ORG	↑ M6-3 21" X 15" BLK/ORG	END DETOUR M4-8a 21" X 15" BLK/ORG
		E R11-3 60"x30" ROAD CLOSED	F R11-3 60"x30" ROAD CLOSED LOCAL TRAFFIC ONLY



TRAFFIC CONTROL LEGEND

- POST WITH MOUNTED SIGN
- TYPE III BREAKAWAY BARRICADE WITH SIGN
- TRAFFIC DRUMS
- WORK ZONE
- WEST BOUND SWAN STREET TRAFFIC DETOUR
- DIRECTION OF ONE-WAY TRAFFIC

NOTE:
1. ALL INSTALLATION PROCEDURES FOR TRAFFIC CONTROL SHALL CONFORM WITH ANY AND ALL NJDOT REQUIREMENTS AND COUNTY REQUIREMENTS.
2. NJDOT APPROVED MOUNTED LIGHTS SHALL BE MOUNTED ON THE SIGNS DURING NIGHT WORK.



NOTICE
THIS DRAWING AND ALL INFORMATION CONTAINED HEREIN IS AUTHORIZED FOR USE ONLY BY THE PARTY FOR WHOM THE WORK WAS CONTRACTED OR TO WHOM IT IS CERTIFIED. THIS DRAWING MAY NOT BE COPIED, REPRODUCED, DISTRIBUTED, OR USED FOR ANY OTHER PURPOSES WITHOUT THE WRITTEN CONSENT OF SUBURBAN CONSULTING ENGINEERS, INC. PER N.J.A.C. ELECTRONIC SUBMISSIONS NOT CONTAINING A VALID DIGITAL SEAL OR PAPER COPIES NOT CONTAINING A RAISED SEAL ARE NOT ORIGINALS AND MAY HAVE BEEN ALTERED.
© COPYRIGHT 2019 SUBURBAN CONSULTING ENGINEERS, INC.™ ALL RIGHTS RESERVED

DESCRIPTION	NO.	DATE:	BY:	CHK:
REVISIONS				

DRAWN BY: JMF 03/29/2019	CHECKED BY: MKM 03/29/2019	CHECKED BY:
--------------------------------	----------------------------------	-------------

ANDREW S. HOLT, PE
NJ PROFESSIONAL ENGINEER
LICENSE NO. 24GER385400

DATE: 03/29/2019

SC E SUBURBAN CONSULTING ENGINEERS, INC.
COA NO. 20110007300

Civil Engineers - Municipal Engineers - Landscape Architects - Planners - Environmentalists - Land Surveyors

98 US Highway 206, Suite 501 2430 Highway 34, Bldg. A, Suite 1R
Flinders, N.J. 07836 - 973.398.1776 Wall, N.J. 08736 - 732.282.1776

EXCELLENCE • ECONOMY • ENVIRONMENT

LAMBERTVILLE MUNICIPAL UTILITIES AUTHORITY
2019 SANITARY SEWER COLLECTION SYSTEM REHABILITATION
CITY OF LAMBERTVILLE, COUNTY OF HUNTERDON,
STATE OF NEW JERSEY

SWAN STREET TRAFFIC DETOUR PLAN I

PROJECT NUMBER: SCE-10130.021
SCALE: 1" = 80'
SHEET 9 OF 12
REVISION