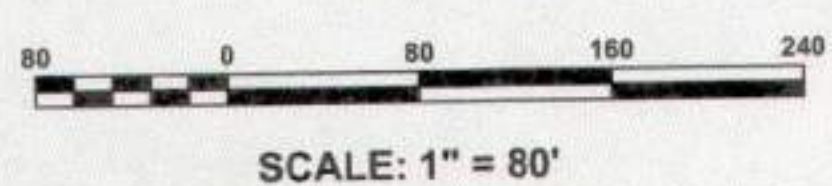


E:\SCE\Lambertville\10130 Sewer Rehabilitation\Sheets\10130.021 07:10 Traffic Detour Plans.dwg Fri, Mar 29, 2019 - 2:46pm jfowler - SUBURBAN CONSULTING ENGINEERS, INC.



NORTH UNION STREET TRAFFIC DETOUR PLAN II
SCALE: 1" = 80'



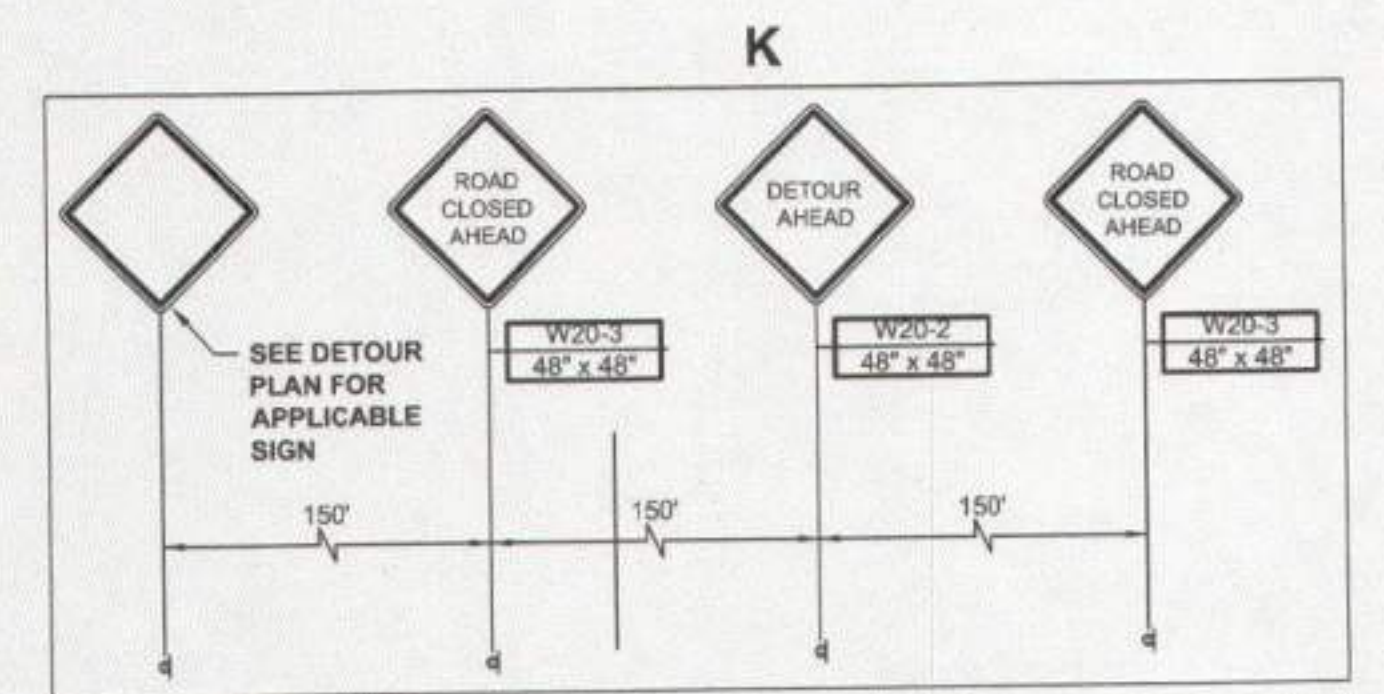
SIGN LEGEND

A	B	C	D
DETOUR M4-8 30" X 15" BLK/ORG	DETOUR M4-8 30" X 15" BLK/ORG	DETOUR M4-8 30" X 15" BLK/ORG	DETOUR M4-8 30" X 15" BLK/ORG
NORTH M3-1 36" X 18" BLK/WHITE	NORTH M3-1 36" X 18" BLK/WHITE	NORTH M3-1 36" X 18" BLK/WHITE	NORTH M3-1 36" X 18" BLK/WHITE
			END DETOUR
M6-1(R) 21" X 15" BLK/ORG	M6-1(L) 21" X 15" BLK/ORG	M6-3 21" X 15" BLK/ORG	M4-8a 21" X 15" BLK/ORG
E	F	G	H
DETOUR M4-8 30" X 15" BLK/ORG	DETOUR M4-8 30" X 15" BLK/ORG	DETOUR M4-8 30" X 15" BLK/ORG	DETOUR M4-8 30" X 15" BLK/ORG
SOUTH M3-1 36" X 18" BLK/WHITE	SOUTH M3-1 36" X 18" BLK/WHITE	SOUTH M3-1 36" X 18" BLK/WHITE	SOUTH M3-1 36" X 18" BLK/WHITE
			END DETOUR
M6-1(R) 21" X 15" BLK/ORG	M6-1(L) 21" X 15" BLK/ORG	M6-3 21" X 15" BLK/ORG	M4-8a 21" X 15" BLK/ORG
I	J		
R11-3 60"x30" ROAD CLOSED	R11-3 60"x30" ROAD CLOSED LOCAL TRAFFIC ONLY		

TRAFFIC CONTROL LEGEND

- POST WITH MOUNTED SIGN
- TYPE III BREAKAWAY BARRICADE WITH SIGN
- TRAFFIC DRUMS
- WORK ZONE
- SOUTH BOUND NORTH UNION STREET TRAFFIC DETOUR
- NORTH BOUND NORTH UNION STREET TRAFFIC DETOUR
- DIRECTION OF ONE-WAY TRAFFIC

NOTE:
1. ALL INSTALLATION PROCEDURES FOR TRAFFIC CONTROL SHALL CONFORM WITH ANY AND ALL NJDOT REQUIREMENTS AND COUNTY REQUIREMENTS.
2. NJDOT APPROVED MOUNTED LIGHTS SHALL BE MOUNTED ON THE SIGNS DURING NIGHT WORK.



NOTICE
THIS DRAWING AND ALL INFORMATION CONTAINED HEREIN IS AUTHORIZED FOR USE ONLY BY THE PARTY FOR WHOM THE WORK WAS CONTRACTED OR TO WHOM IT IS CERTIFIED. THIS DRAWING MAY NOT BE COPIED, REPRODUCED, DISCLOSED, REPRODUCED, OR REPRODUCED FOR ANY OTHER PURPOSE WITHOUT THE WRITTEN CONSENT OF SUBURBAN CONSULTING ENGINEERS, INC. PER N.J.A.C. 17:27. ELECTRONIC SUBMISSIONS NOT CONTAINING A VALID DIGITAL SEAL OR PAPER COPIES NOT CONTAINING A RAISED SEAL ARE NOT ORIGINALS AND MAY HAVE BEEN ALTERED.
© COPYRIGHT 2019 SUBURBAN CONSULTING ENGINEERS, INC. ALL RIGHTS RESERVED

DESCRIPTION	NO.	DATE:	BY:	CHK:
REVISIONS				

DRAWN BY:
JMF
03/29/2019
CHECKED BY:
MKM
03/29/2019
CHECKED BY:

ANDREW S. HOLT, PE
NJ PROFESSIONAL ENGINEER
LICENSE NO. 24GE03855400
DATE: 03/29/2019

SC SUBURBAN CONSULTING ENGINEERS, INC.
Civil Engineers - Municipal Engineers - Landscape Architects - Planners - Environmentalists - Land Surveyors
95 US Highway 206, Suite 101, Flemington, NJ 07836 - 973.398.1776
2430 Highway 34, Bldg. A, Suite 1R, Wall, NJ 08774 - 732.282.1776
EXCELLENCE • ECONOMY • ENVIRONMENT

LAMBERTVILLE MUNICIPAL UTILITIES AUTHORITY
2019 SANITARY SEWER COLLECTION SYSTEM REHABILITATION
CITY OF LAMBERTVILLE, COUNTY OF HUNTERDON,
STATE OF NEW JERSEY
NORTH UNION STREET TRAFFIC DETOUR PLAN II

PROJECT NUMBER:
SCE-10130.021
SCALE:
1" = 80'
SHEET 8 OF 12
REVISION